

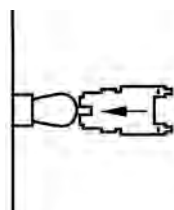


MPacks

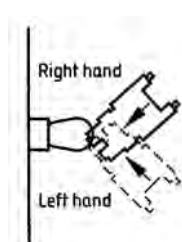
Accessible unisex toilet equipment

Wheelchair users should be able to approach, transfer to, and use the sanitary facilities provided within a building. This requires the provision of a wheelchair accessible unisex toilet and should be compliant with the British Standard, BS 8300 February 2009 + A1: 2010 edition, that focuses on the 'design of buildings and their approaches to meet the needs of disabled people'. N&C Phlexicare Doc MPacks are designed with complete safety and comfort in mind.

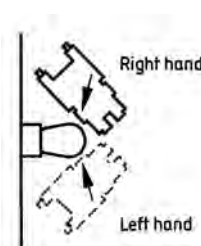
The space provided for manoeuvring, should enable wheelchair users to adopt various transfer techniques that allow independent or assisted use.



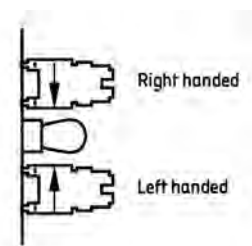
Front transfer, using grab rails to move from wheelchair to W.C.



Oblique transfer, using grab rails and/or grasping W.C.



Lateral transfer, using grab rails and/or grasping W.C. with one wheel backed up to rear wall and the wheelchair at an angle to W.C



Lateral transfer, using grab rails and/or grasping W.C with both wheels backed up to rear wall and the wheelchair roughly parallel to W.C.

Light reflective values

Visual impairment in users can mean reliance on the use of spatial perception and orientation, such as the skirting-floor and skirting-wall junction for assistance. The contrast in the colours, lighting and surface finish of a room and the components within it play a major role in creating a fully accessible environment. Guidance found in The Building Regulations Approved Document Part M, advises architects and designers working on new build projects or major refurbishment to contrast visually adjacent critical surfaces by selecting colours with a difference in light reflectance value (LRV) of more than 30 points. A test method for measuring the LRV of flat surfaces with opaque materials, including those coated with non-opaque coatings, or coverings and multi-coloured surfaces, is described in BS 8493.



Consideration should also be made for the positioning of equipment for both wheelchair and ambulant users. The BS8300 is very prescriptive in these measurements and requirements. N&C Phlexicare provides these dimensions in technical drawings contained within each MPack box supplied.

Shelving

One large and one small acrylic capped ABS shelves with drainage slots and stainless steel supports.

Lever

The large spatulate lever is ideal for wheelchair users and can be situated on the correct open side of our cistern.

Backrest

With this low level system W.C. N&C Phlexicare supplies a colour contrasted padded backrest.

Drop Down Rail

A sturdy colour co-ordinated drop down rail.

Toilet Seat

A quality toilet seat with high colour contrast, unique stabilising buffers, plus stainless steel hinges for added strength.

Raised Height Pan

At 480mm to the top of the seat, this large footprint pan offers the ultimate in stability.

Colour Contrast

Colour contrast is an important design consideration of your Document M Accessible Toilet, ensuring that the grab rails and seat are highly visible to users with visual impairments.

Cistern complete with screw down lid for extra safety and security.

Audio/Visual Alarm with Visible Reset Button

The Phlexicare emergency alarm has a red pull cord plus the required two red 50mm bangles. (BS8300 February 2009).

Accessories

This package consists of automatic hand dryer, soap, paper towel and toilet tissue dispensers. All are easy to use and durable.

Grab Rails

An ergonomic design with a slip-resistant grip, non-conductive, deep blue for colour contrast & concealed fixings. The 5th grab rail is fitted to the inside of the toilet door.

Thermostatic Mixer Tap

This TMV3 Thermostatic basin mixer tap is an integrated solution that will prevent hand scalding.

Basin

The gently rounded basin with a fully glazed underside, is ideal for wheelchair users and handed tapholes enable the correct positioning of the tap nearest to the W.C. pan.

Extra Basin Bracket

An extra basin bracket is supplied with the Classic MPack for added support.



Two clothes hooks, one should be positioned at 1050mm and the other positioned at 1400mm above the floor. Stainless steel mirror 1000mm x 400mm. The above items are fitted on the opposite wall to the basin.

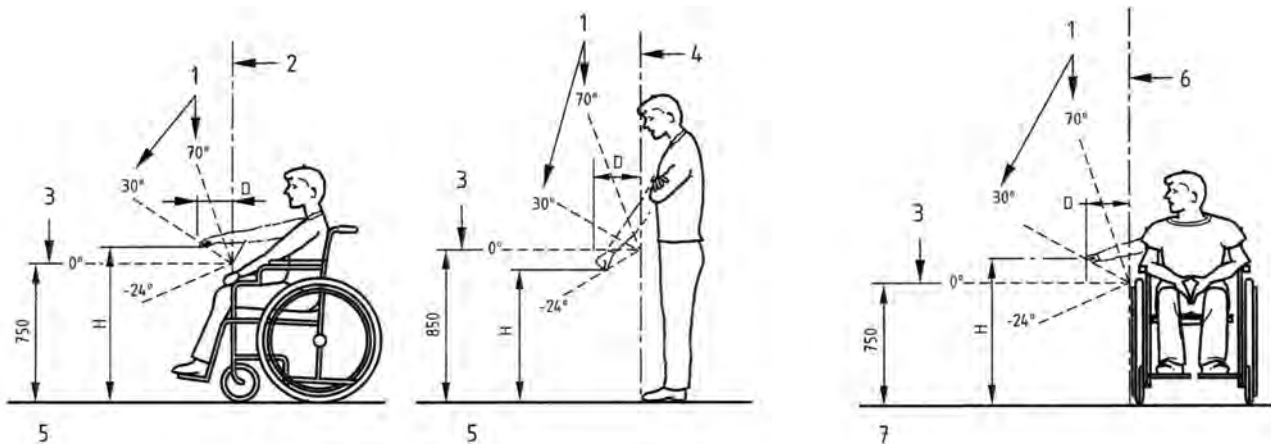
Reach Ranges

Extensive research has been carried out on reaching activities for wheelchair users and ambulant disabled in everyday activities. This has particular relevance for Document M toileting and the positioning of all equipment and accessories, for example the relationship of the W.C. to the finger rinse basin and other accessories should allow a person to wash and dry hands while seated on the W.C. If these measurements have not been adhered to, it may render the installation non compliant.

There are two reach ranges, which are intended to relate to the physical demands of an activity or action in terms of its precision or how often it is normally carried out.

A) **Comfortable reach range** - Determined by the capability of a person to reach in a comfortable and relaxed manner without stretching or bending from the waist and is appropriate for an activity that requires precision in its execution and is frequently performed.

B) **Extended reach range** - Determined by the capability of a person to reach when stretching and/or bending the body and is appropriate for an activity that does not require precision and is infrequently performed.



- 1 Reach angles
- 2 Vertical reference plane (from front of seat)
- 3 Horizontal reference plane
- 4 Vertical reference plane (from toes)
- 5 Front access
- 6 Vertical reference plane (from wheel)
- 7 Side access

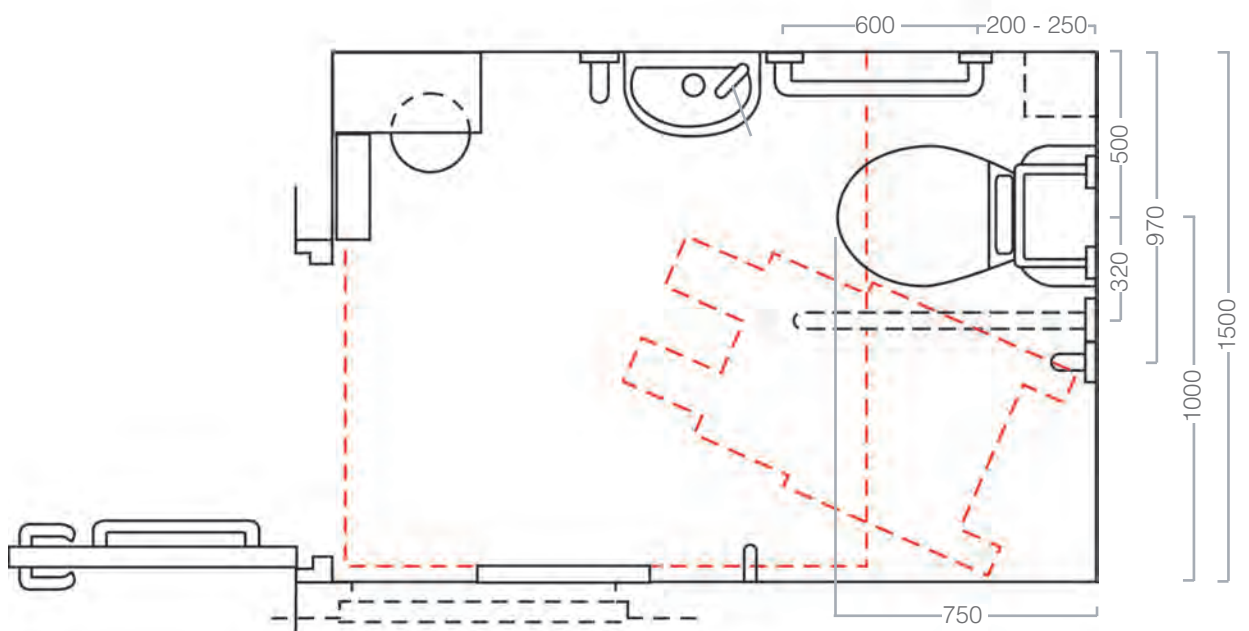
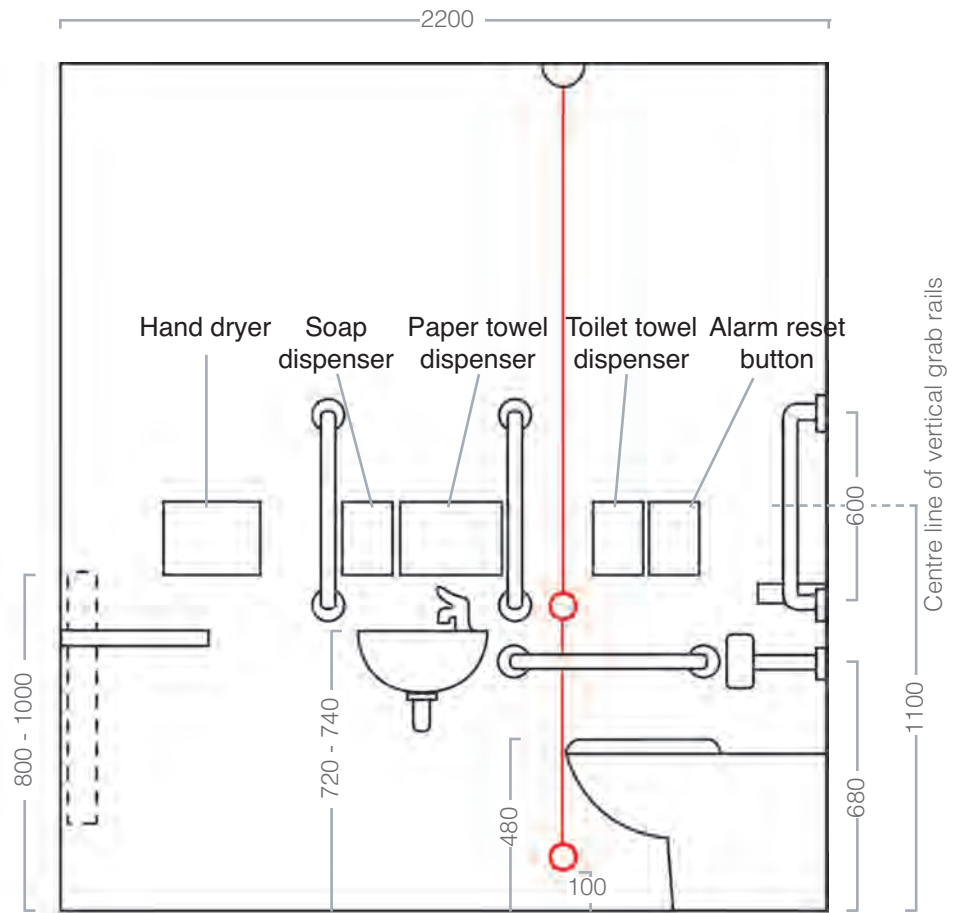
Person	Access	Reach Angle	Height (H) mm		Depth (D) mm	
			Comfortable	Extended	Comfortable	Extended
Wheelchair	Front	+70°	1000	1150	90	120
		horizontal	(750)	(750)	180	230
		-24°	650	650	120	200
	Side	+70°	1060	1170	100	135
		horizontal	(750)	(750)	220	310
		-24°	665	630	165	230
Ambulant disabled	Front	+70°	1500	1625	200	250
		horizontal	(850)	(850)	280	450
		-24°	750	700	180	310

The table shows the dimensions, which are for reach at right angles to the vertical reference plane, are for height and the associated depth from the horizontal reference plane. The dimensions shown in the table represent the reach capabilities of 90% of the sample of wheelchair users and ambulant disabled people who took part in the trials.

N&C Phlexicare MPack

These drawings are fully compliant with BS8300. They show the dimensions as well as the location of sanitaryware and other fittings, for the standard unisex accessible corner W.C.

Failure to adhere to the BS8300 February 2009 +A1: 2010 standard will result in the installation being non compliant. Eg: Use of a centre taphole basin would render installation instantly non-compliant.



Wheelchair turning space 1500 x 1500mm