

Cistern lever should be installed on the right of the cistern for LH installation and on the left for a RH installation.

(Left hand illustrated.)

There must be visual contrast between the wall and floor finishes. The wall finish must also contrast with the sanitaryware and grab rails. Lever action tap supplied.

The basin must be handed left and right to enable the tap to be fitted nearest to the W.C. Failure to achieve this will render the installation non-compliant.

Doors should be fitted with light action privacy bolts with emergency release mechanisms or N&C Phlexicare Radar locks supplied by N&C under the Radar National key scheme.

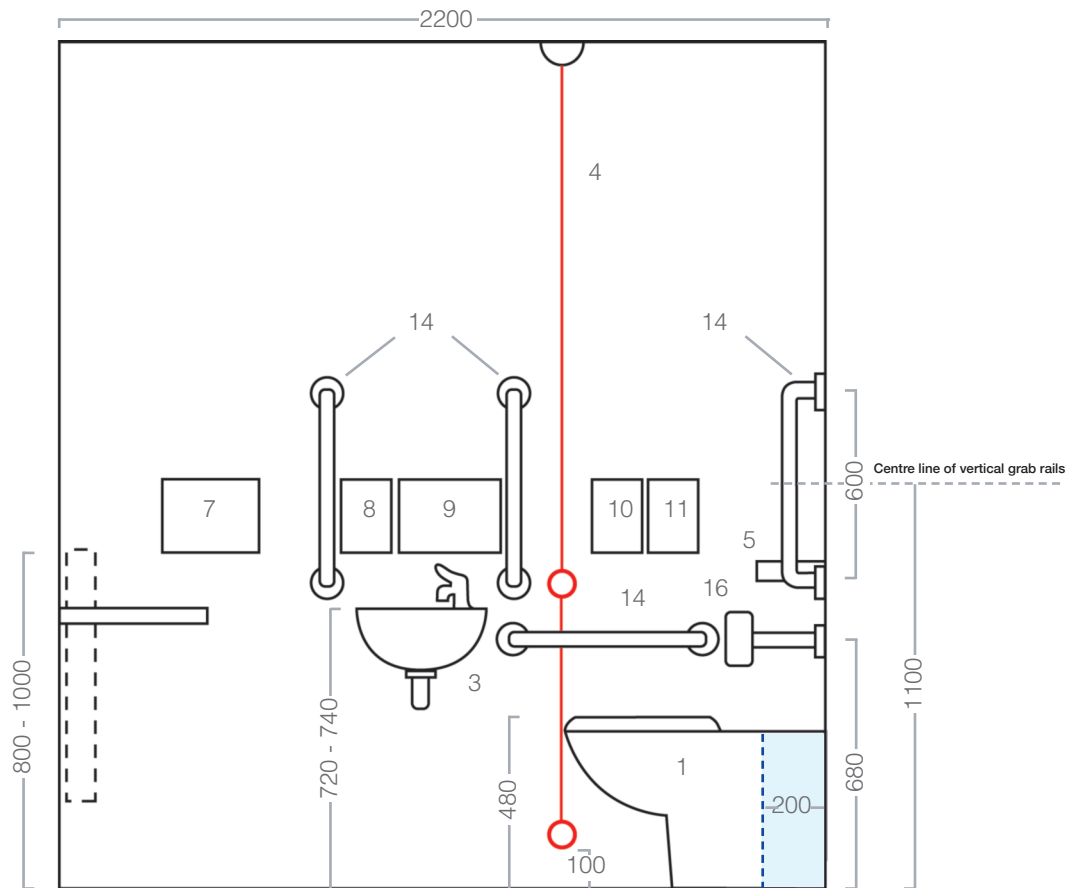
All doors, alarms, Equality Act compliant handles & associated Ironmongery can all be obtained from N&C. An emergency assistance alarm must have:

1. Visual and audible indicators confirming the emergency call has been received.

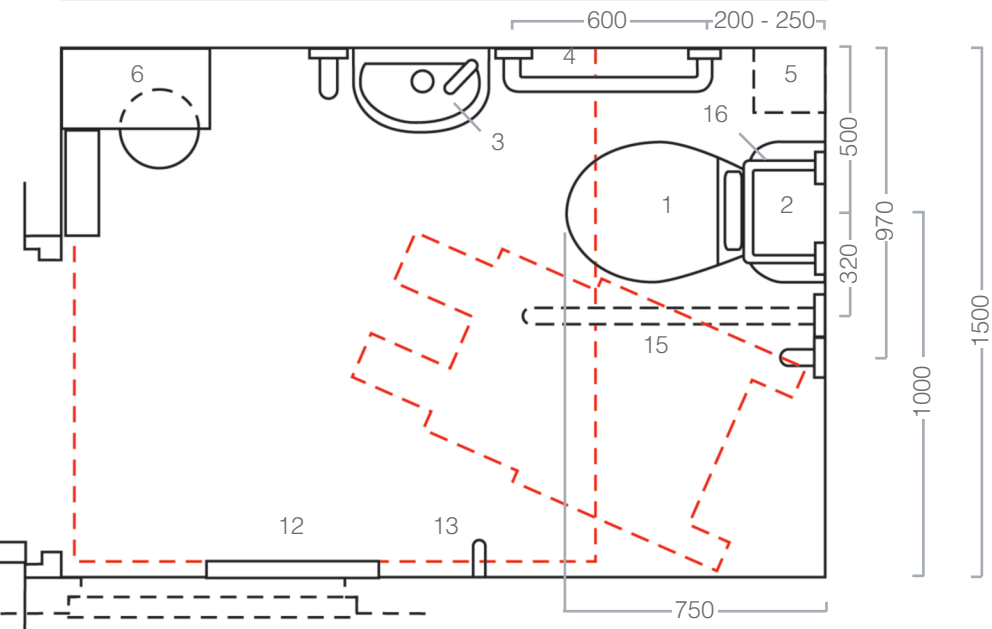
2. A reset control reachable from the W.C. pan or a wheelchair - shower seat.

3. A signal that is distinguishable visually and audibly from the fire alarm.

4. A red alarm cord with two rings, one set between 800mm to 1000mm and the other 100mm above the floor surface.



The W.C. pan can be installed as a standard low level configuration with exposed cistern. To achieve this install the W.C. 200mm off the wall. If required the void left could be filled by our laminate spacer box unit see page 170



Classic Blue Low Level

P6830056

1	Pentland Low Level Raised Height Pan
1	Blue Seat only (Advanced)
2	Pentland Reversible Cistern with Screw Down Lid
2	6 litre Cistern Fitting Pack Dual Flush
2	Chrome Plated Spatulate Flush Lever
2	White 760 x 305mm Flush Bend
3	Pentland Hand Basin 395 x 340mm
3	White Plastic Taphole Stopper
3	Concealed Basin Hanger Brackets-Pair
3	Waste Support Bracket
3	Chrome Thermostatic Mono Basin Mixer - Lever Operation
3	Chrome 32mm Grated Waste
3	Chrome 32mm Plastic Bottle Trap

4	Phlexicall Audio Visual Alarm, 2 Pull Rings
5	White Plastic Colostomy Bag Shelf, Small
6	White Plastic Colostomy Bag Shelf, Large
7	Automatic Hand Dryer
8	Soap Dispenser
9	Paper Towel Dispenser
10	Toilet Tissue Dispenser
11	Alarm Reset Button
12	Stainless Steel Mirror 1000 x 400mm
13	Blue Clothes Hooks x 2
14	Blue Fluted 600 x 35mm Grab Rails x 5
15	Blue Folding Rail 850mm
16	Blue Backrest Padded 400 x 250mm